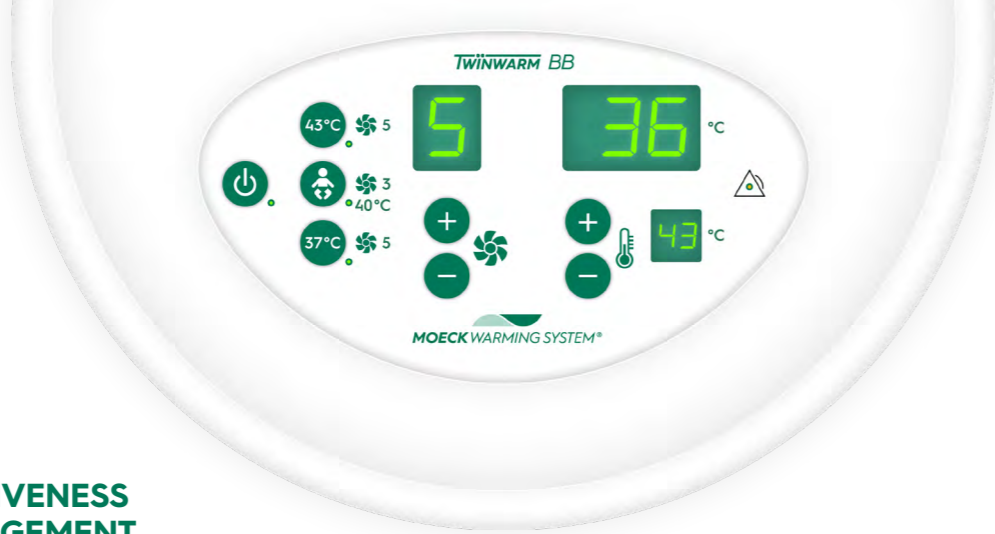


  
**MOECK WARMING SYSTEM®**



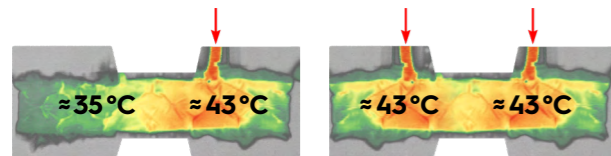
**TWINWARM BB**  
AIR WARMING DEVICE



## IMPROVING THE EFFECTIVENESS OF TEMPERATURE MANAGEMENT

The forced air warming device of the MOECK WARMING SYSTEM® is easy and intuitive to operate via a display. The desired target temperature can be reached quickly and easily thanks to a temperature setting accurate to the degree between 28 °C and 43 °C, operation with ambient temperature (heating off) as well as an air volume outlet that can be individually selected from 5 levels. The user always has the air supply temperature in view and under control based on the display of the selected and the actual hose outlet temperature.

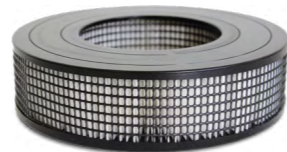
To improve the efficiency of a temperature management system, the TWINWARM BB forced air warming unit is equipped with two hoses.



The air exiting the hose is directly and reliably measured by sensors in both hose ends.

Article no.	Size* and weight	Product details
12BB05 (eng)	46×37×46 cm (D×W×H) approx. 12.6 kg	<ul style="list-style-type: none"> <li>• Temperature setting to the degree</li> <li>• Variable airflow</li> <li>• Three-stage filter system</li> <li>• Integrated hose end receptacles, standard railing tube holder and swivel castors</li> </ul>

To achieve a high level of safety and hygiene, the forced air warming device has a three-stage filter system: an internal EPA filter that removes fine particles from the ambient air and a particle filter consisting of a flow filter and filter attachment that filters the coarse particles.



Integrated hose end receptacles, a standard railing tube holder and swivel castors allow flexible use of the forced air warming device.

The maintenance of the device is simple and consists only of regularly replacing the coarse particle filters (when needed) as well as the EPA filters (after two years at the latest).



## THE MOECKWARMINGSYSTEM® IN OVERVIEW

	Product picture	Product name	Type no.	Size* and weight	Number of air inlets	Product details
Warming blankets – temperature control from above		<b>Upper body blanket</b>	894	193×70 cm (L×W), Head section 57×16 cm (L×W) approx. 440 g	••	• With built-in active head temperature control
		<b>Full body blanket</b>	895	196×128 cm (L×W) approx. 710 g	•••	• Snap-fasteners allow separation of top third
		<b>Lower body blanket</b>	897	115×118 cm (L×W) approx. 400 g	•	• Can also be used as a full body blanket for babies and infants
		<b>Multi I</b>	908	180×94 cm (L×W), Cutout 55×36 cm (L×W) approx. 520 g	••	• Full body blanket with cutout
Warming mats – temperature control from below with pressure-relief		<b>Baby / Infant</b>	902	130×52 cm (L×W), Wings 96×49 cm (L×W) approx. 890 g	••••	<ul style="list-style-type: none"> <li>• Integrated hood and lateral wings</li> <li>• Can be folded to incubator size</li> <li>• Turning down the cover turns it into a kind of sleeping bag</li> <li>• The size of this „sleeping bag“ can be adjusted using the snap-fasteners on the side</li> </ul>
		<b>Universal II</b>	906	204×64 cm (L×W) approx. 1960 g	•••	<ul style="list-style-type: none"> <li>• Temperature control and pressure-relieving support over the entire surface of the OR table</li> <li>• Supports an easier re-bedding</li> </ul>
		<b>Universal III</b>	910	115×64 cm (L×W) approx. 1200 g	••••	<ul style="list-style-type: none"> <li>• Temperature control and pressure-relieving support over the entire surface of the OR table</li> <li>• Ideal for the gynaecological operating table</li> </ul>
Warming blankets and mats – temperature control from above and below with pressure-relief		<b>Adults II</b>	904	Upper section 70×170 cm (L×W), Lower section 115×64 cm (L×W) approx. 1540 g	••••	<ul style="list-style-type: none"> <li>• With built-in upper body blanket</li> <li>• Temperature control and pressure-relieving support over 60% of the OR table</li> <li>• Upper body blanket in breast area and at the head opening – separable via snap-fasteners</li> </ul>
		<b>Infant Cardio</b>	909	Thorax hoses 48×19 cm (L×W), Lower section 86×74 cm (L×W) approx. 590 g	•••	<ul style="list-style-type: none"> <li>• Ideally suited for the cardiac catheter table</li> <li>• With rolls of fabric on the side to prevent liquids/fluids from leaking at the sides</li> <li>• With resting-surface perforations for liquid/fluids drainage</li> </ul>

\*Since the textile products shrink during the first specialized washing cycles, the specified dimensions of the usable surface (excluding air inlets) apply after several cycles and with a tolerance of ±2 cm.

# MOECK & MOECK



## CONTACT INTERNATIONAL

MOECK & MOECK GmbH  
Waidmannstraße 12D  
22769 Hamburg · Germany

Tel. +49 (0) 40 4111 4111  
Fax +49 (0) 40 4116 7354  
info@moeckundmoeck.de

## CONTACT GERMANY

Ahrens Textil-Service GmbH  
Fritz-Straßmann-Straße 11  
25337 Elmshorn · Germany

Tel. +49 (0) 4121 641 0  
mws@dbl-ahrens.de



# BITMEDICAL

## CONTACT SWISS

Bitmedical AG  
Kastellstrasse 1  
4303 Kaiseraugst · CH

Tel. +41 (0) 61 331 60 90  
info@bitmedical.com

# MOECK GmbH

## CONTACT AUSTRIA

MOECK GmbH  
Industriezone-Bürgerfeld 4  
3150 Wilhelmsburg · Austria

Tel. +43 (0) 1 9416 999  
Fax +43 (0) 1 9416 999  
info@moeck.at

